

THE AREA 3' AROUND THE OUTER SURFACE OF THE FIRE HYDRANT SHALL BE CLEAR OF ALL OBSTRUCTIONS AND/OR STRUCTURES GREATER THAN 6" ABOVE FINAL GRADE. SEE NOTE 1.

CITY OF AUSTIN VALVE STEM CASTING & COVER (SEE STD. DETAILS 511S-7, 511S-13A & 511S-13B)

PAVEMENT

STEM EXT. SEE NOTE 5

NO MORE THAN 2 BENDS SHALL BE UTILIZED. BENDS SHALL BE 11-1/4°, 22-1/2°, OR 45°.

SEE OPTIONS BELOW

SEE NOTE 9

24" MAX. SEE NOTE 6 450mm (18")

SEE NOTE 2

CONCRETE CURB

BURY DEPTH 4' MIN. 5' MAX.

900mm (36") MIN.

FIRE HYDRANT TO BE SET PLUMB

2" MIN. 8" MAX.

GRAVEL DRAIN; SEE NOTE 4

36" MIN.

12" MIN.

24" MIN.

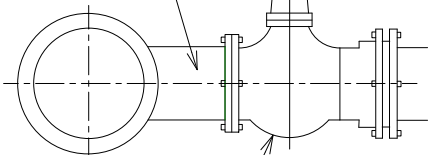
6" DI PRESSURE CLASS 350 PIPE (TYP.)

4"x12"x12" CONCRETE BLOCK (CLASS A)

RESTRAINED JOINTS (TYP.) SEE NOTE 3

OPTION 1

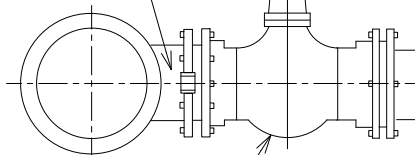
6" FLG TEE



6" FLG x MJ GATE VALVE

OPTION 2

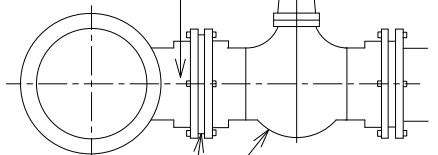
6" SWIVEL TEE (FH TEE)



6" MJ x MJ GATE VALVE

OPTION 3

6" MJ TEE



BOLT-THRU MJ RESTRAINT PER SPL WW-27B

6" MJ x MJ GATE VALVE

CITY OF MANOR

FIRE HYDRANT INSTALLATION ON DEEP WATER MAINS

RECORD COPY SIGNED BY
FRANK T. PHELAN, P.E. 11/02/2017

Frank T. Phelan

THE ARCHITECT/ENGINEER ASSUMES RESPONSIBILITY FOR APPROPRIATE USE OF THIS STANDARD.

STANDARD NO.

M511S-17A

1 OF 2

NOTES:

1. DIMENSION FROM GUTTER FACE OF CURB TO OUTERMOST PART OF ANY NOZZLE CAP SHALL BE NOT LESS THAN 3', NOR MORE THAN 6'. NO PART OF A HYDRANT OR ITS NOZZLE CAPS SHALL BE WITHIN 6" OF ANY SIDEWALK OR PEDESTRIAN RAMP. ANY FIRE HYDRANT PLACED NEAR A STREET CORNER SHALL BE LOCATED OUTSIDE THE CURVE RADIUS AND A MINIMUM OF 4' FROM RAMPS.
2. ONE BARREL EXTENSION NOT EXCEEDING 2' LENGTH MAY BE INSTALLED DIRECTLY BELOW THE FIRE HYDRANT IN ORDER TO MEET THE REQUIRED BURY DEPTH OF 4' TO 5'. BREAK AWAY BOLTS (SHOE TYPES) SHALL BE PROPERLY SPACED AND PLACED.
3. FIRE LINE SHALL HAVE ALL JOINTS RESTRAINED FROM MAIN TO FIRE HYDRANT. JOINTS SHOWN MAY VARY. SEE SPL WW-27, WW-27A, AND WW-27B FOR RESTRAINT OPTIONS.
4. BELOW EACH HYDRANT, A DRAINAGE PIT 2' IN DIAMETER AND 1' DEEP SHALL BE EXCAVATED AND FILLED WITH COMPACTED COARSE GRAVEL OR BROKEN STONE MIXED WITH COARSE SAND UNDER AND AROUND THE BOWL OF THE HYDRANT, AND TO A LEVEL 6" ABOVE THE HYDRANT DRAIN OPENING (SEE STD. SPEC. 510). THE HYDRANT DRAINAGE PIT SHALL NOT BE CONNECTED TO A SANITARY SEWER. THE DRAIN GRAVEL SHALL BE COVERED WITH FILTER FABRIC TO PREVENT BLOCKAGE OF VOIDS IN THE GRAVEL BY MIGRATION OF BACKFILL MATERIAL. THE BOWL OF EACH HYDRANT SHALL BE WELL BRACED AGAINST UNEXCAVATED EARTH AT THE END OF THE TRENCH TAKING CARE NOT TO OBSTRUCT THE HYDRANT DRAIN HOLES, IF THE HYDRANT LEAD IS NOT RESTRAINED TO THE MAIN.
5. WELD SOCKET 2-1/2" x 2" TO 1" SCH. 40 ROUND STEM EXTENSION, FIT ON OPERATING NUT. USE SCH. 80 ROUND STEM EXTENSION FOR LENGTHS OVER 10'. VALVE STEM EXTENSIONS SHALL CONSIST OF A SINGLE PIECE OF REQUIRED LENGTH WITH A SOCKET ON ONE END AND A NUT ON THE OTHER.
6. VALVE STEM EXTENSIONS ARE REQUIRED ON ALL VALVES THAT EXCEED 3' DEEP FROM FINISHED GRADE. VALVE STEM EXTENSIONS SHALL BE PLACED SUCH THAT THE EXTENSION NUT IS BETWEEN 18" AND 24" FROM FINISHED GRADE.
7. FOR FIRE HYDRANT LEADS AT A MAIN OUTLET LARGER THAN 6" DIAMETER, OUTLET SHALL BE FLANGED AND A FLANGE x FLANGE REDUCER SHALL BE INSTALLED DIRECTLY ON THE OUTLET.
8. WRAP 8 mil POLY-FILM WRAP ON ALL BURIED PIPE AND FITTINGS.
9. THRUST BLOCKING REQUIRED FOR PIPE SIZE & SOIL CONDITION (SEE STD. DETAIL 510-6)
10. STEAMER NOZZLE TO BE 4.5 " NST FIRE THREAD CONNECTION.
11. FIRE HYDRANTS SHALL BE PAINTED RED.

CITY OF MANOR	FIRE HYDRANT INSTALLATION ON DEEP WATER MAINS	
RECORD COPY SIGNED BY <i>Frank T. Phelan</i> FRANK T. PHELAN, P.E. 11/02/2017	THE ARCHITECT/ENGINEER ASSUMES RESPONSIBILITY FOR APPROPRIATE USE OF THIS STANDARD.	STANDARD NO. M511S-17A 2 OF 2